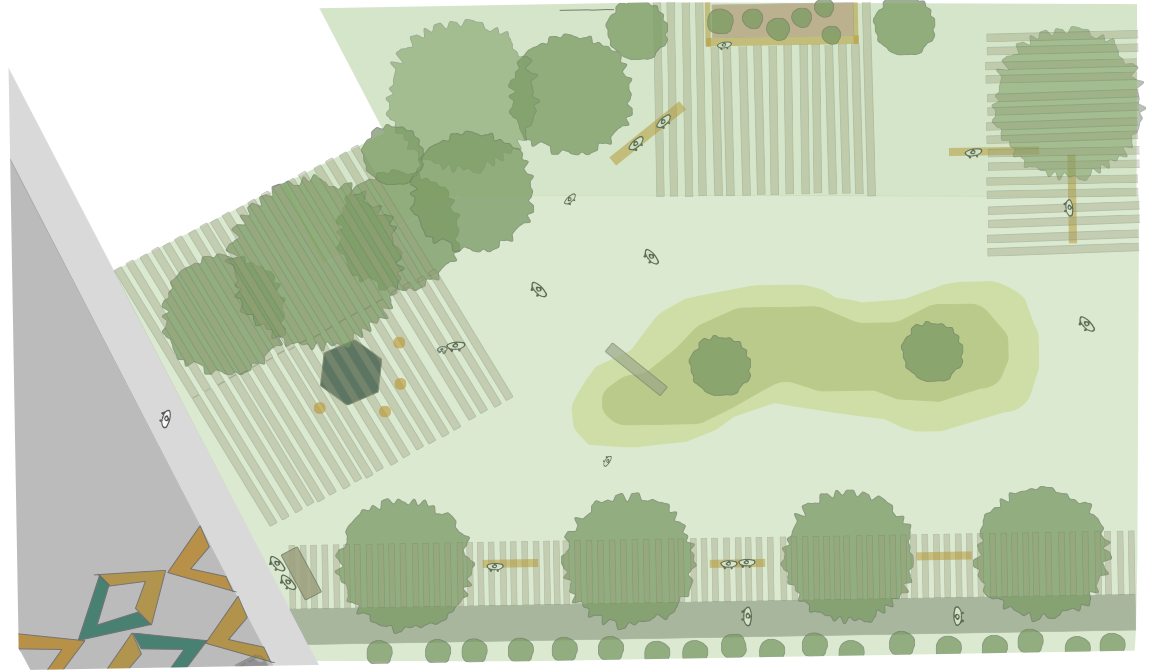
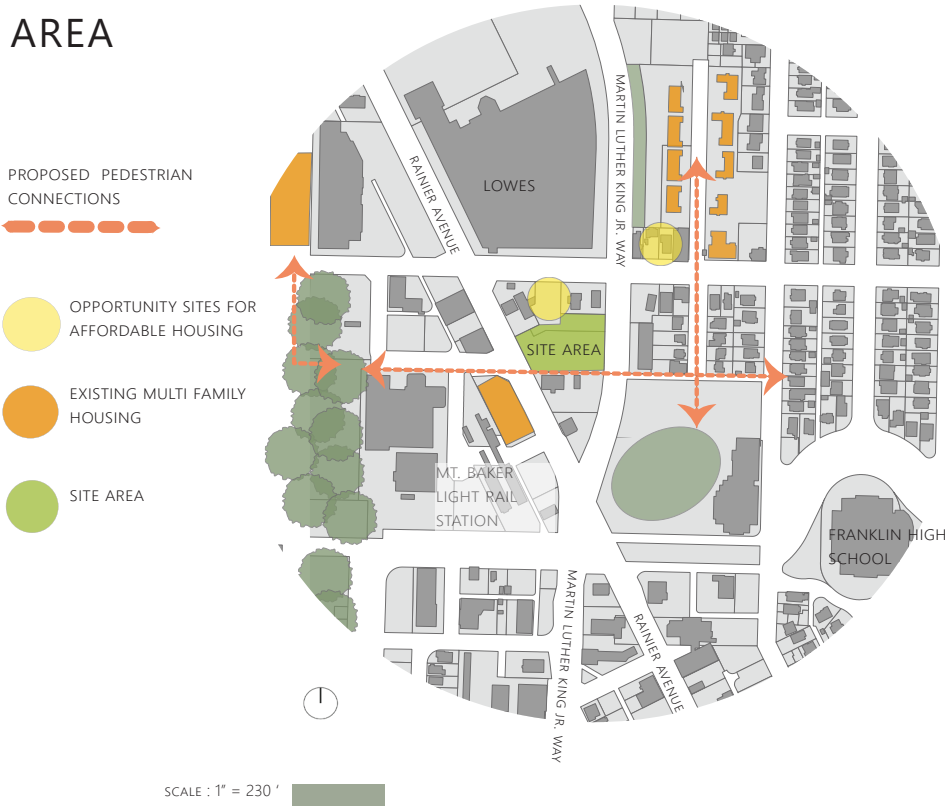


GATHER TOGETHER

green civic spaces for health + connection

Right of Way Studio | Berney | Fall 2018 | Clara Cheeves

MT. BAKER STATION AREA



CONNECTIONS

A pedestrian pathway will connect the Rainier Valley to Cheasty Green space, Franklin High School, Mt. Baker and Beacon Hill

Providing a connection to Cheasty green space and a central gathering space is important for the social and physical health of residents.

GATHERING

The current metro transit center can be designed to become a hub for the immediate and surrounding neighborhoods.

The green space provides spaces for sun, shade, playing and relaxing. A space to build the social capital of the area



New pedestrian pathway and outdoor library + moveable seating

Permeable pavement

PRECEDENTS

Passeig De St. Joan Boulevard | Barcelona, Spain



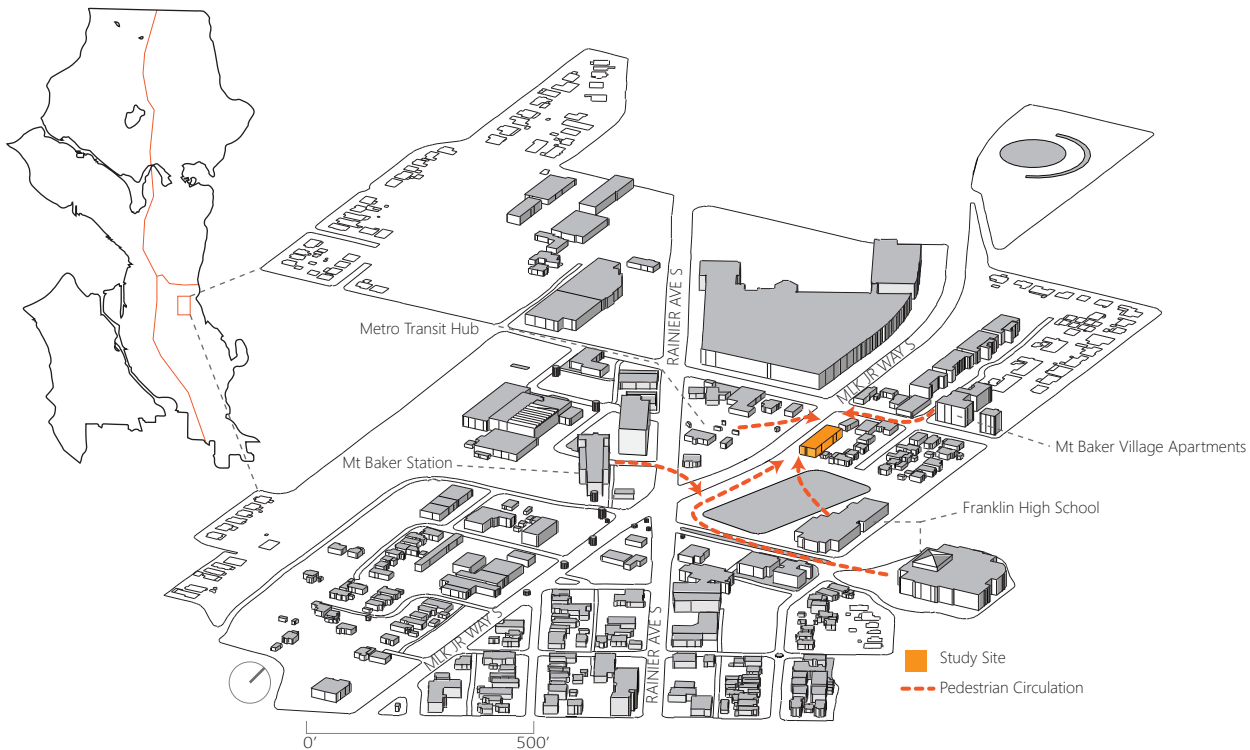
Tenderloin National Forest | San Francisco, California



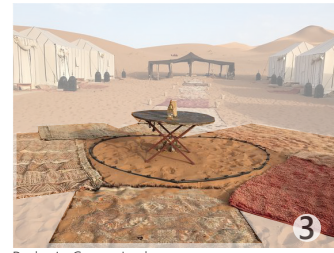
Bryant Park | New York, New York



PEDESTRIAN CIRCULATION



PRECEDENTS

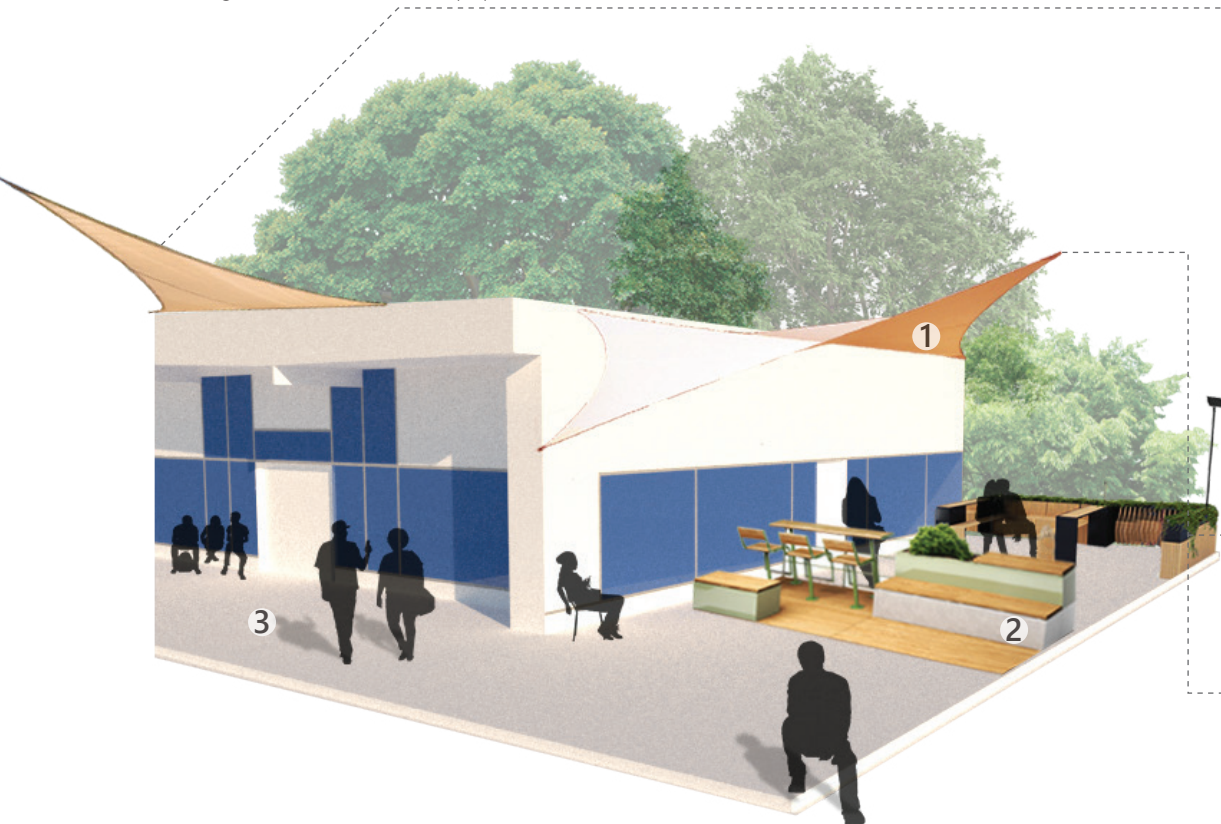


EXISTING CONDITIONS

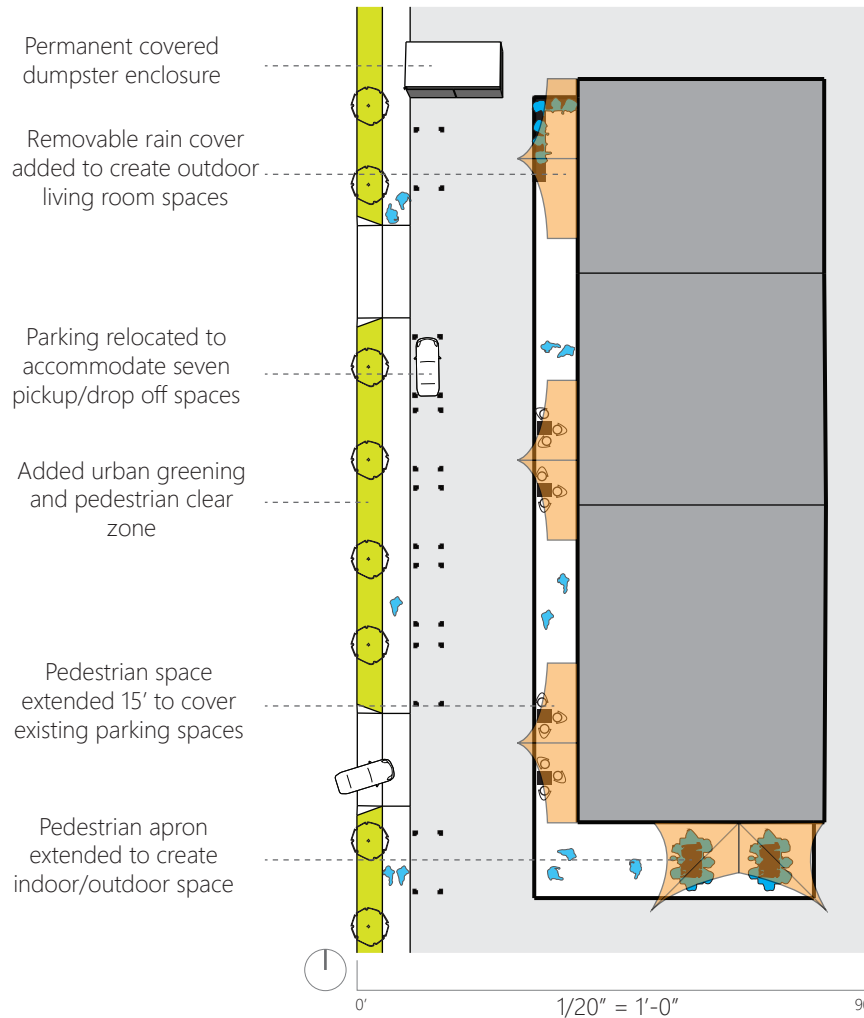


PROPOSED DESIGN

This design intervention seeks to leverage the strip mall vernacular building to reinvigorate local commercial activity. Place keeping is the emphasis of this intervention, building a flexible space that can adapt to the tenants needs to attract the existing community. By reinvigorating the commercial activity of this area, the existing community can see themselves reflected in the storefronts of their neighborhood. This nimble and joyful space can be a social hub for the community as the Mt. Baker neighborhood continues to grow denser and more populous.



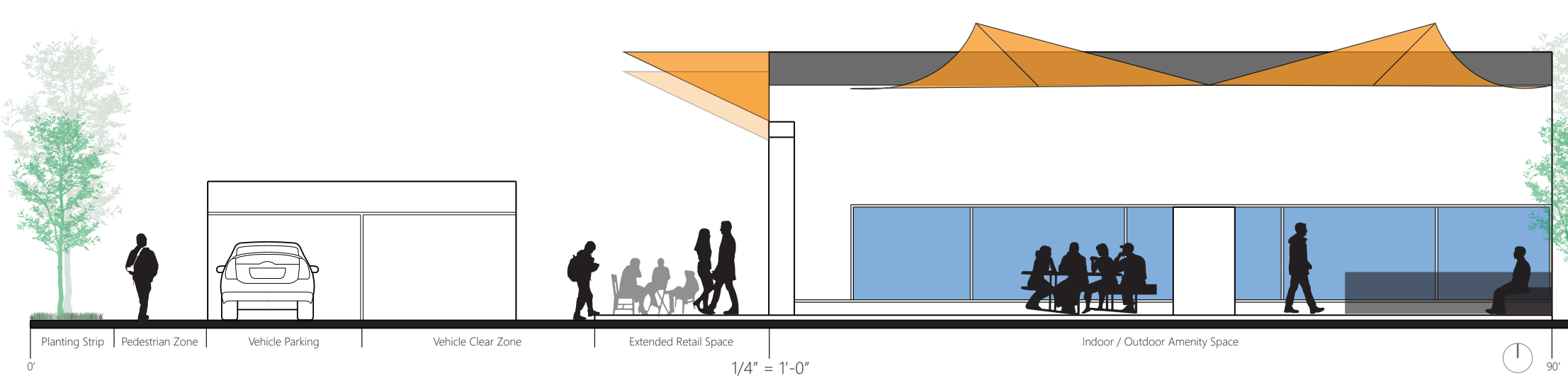
PLAN VIEW

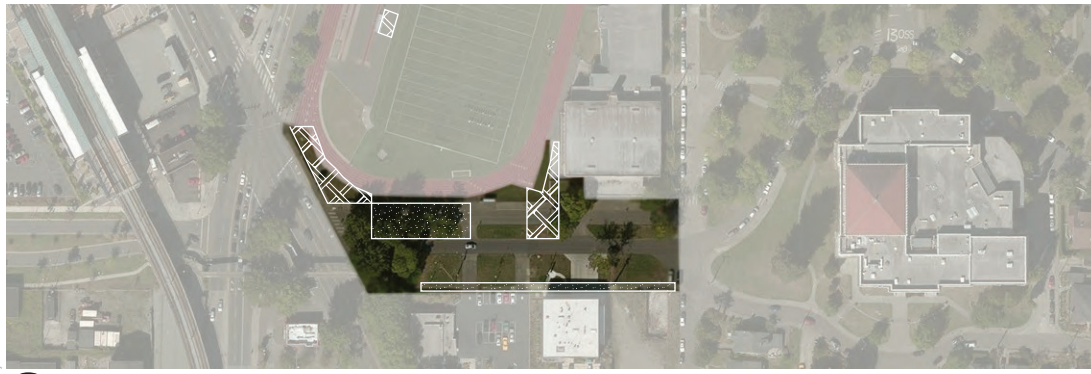
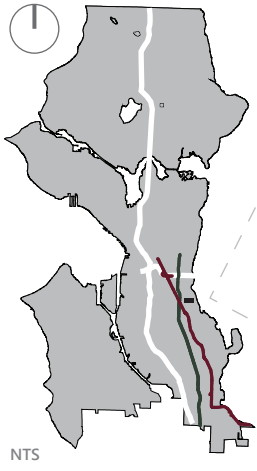


VIBRANT PLACE KEEPING



SECTION / ELEVATION





Context

NTS

Mount Baker is commonly regarded as the entry to the Rainier Valley, where two the arteries of MLK Jr Way S and Rainier Ave S converge.

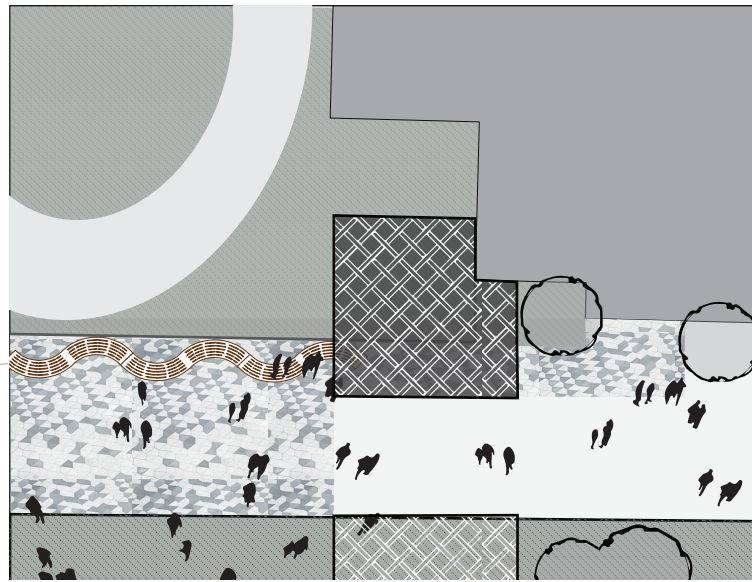
The site of this study is located along S Mount Baker Blvd in between the aforementioned intersection and Franklin HS.

The north lane of S Mount Baker Blvd here becomes a flexible and shared space.

Intended for the everyday use of Franklin High School, educators and students will cultivate the space's identity. Whether just a spot to hang out between classes, or, the site of an ambitious outdoor learning session, the space prioritizes the need of multiple generations.

In creating a space responsive to youth, S Mount Baker Blvd becomes a family-friendly place for many Mt. Baker neighborhood residents.

Plan View



1/16" = 1'

Horizontal demarcation of the space is marked by the pavement texture and organic seating form

The open lattice canopy allows for light to shine through, while enclosed options are available for shelter

Section View

Looking East

With the proximity to the high school, the interventions spill over to the playfield



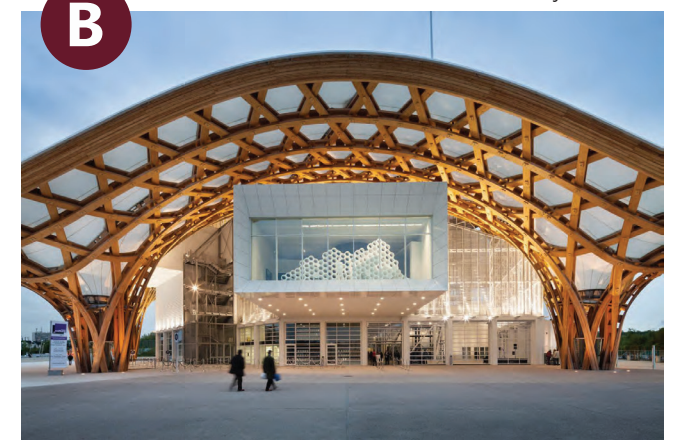
1/4" = 1'

Precedents



A

Youth-Focused Plaza Barrancabermeja, Colombia



B

Lattice Canopy by Shigeru Ban, Metz France



C

Pedestrianized Street, Brighton UK

Proposal Snapshot



NTS